

Kentucky Center for Statistics



Exploring the
Student's Right
to Know

We
connect data
from
different state agencies
to
better inform
our Commonwealth.



KYSTATS Legislation

KYSTATS is charged with collecting accurate data in the Kentucky Longitudinal Data System in order to link the data and generate timely reports about student performance through employment to be used to guide decision makers in improving the Commonwealth of Kentucky's education system and training programs.

Kentucky Revised Statute 151B.132



Kentucky Department of Education

- K12 Students
- K12 Teachers
- K12 Staff
- Career/Technical Education
- Teacher/Education Certification
- Governor's Scholar Program

Council on Postsecondary Education

- Public & Independent Postsecondary

Commission on Proprietary Education

- Proprietary Colleges

Bureau of Labor Statistics

- Labor Market Information

Labor Cabinet

- Unemployment Insurance (UI) Claims & Wages

Department of Workforce Investment

- Workforce Training
- Office for the Blind & Vocational Rehab
- Job Seekers
- Focus
- Apprenticeships

Education and Workforce Development Cabinet

- Skills U (Adult Education)

Finance & Administration Cabinet

- Revenue Data
- Financial Aid - Kentucky Higher Education Assistance Authority

Kentucky Longitudinal Data System (KLDS) Powered by KYSTATS



Cabinet for Health and Family Services

- Early Learning - Child Care
- Supplemental Nutrition Assistance Program (SNAP)
- Temporary Assistance For Needy Families (TANF)
- SNAP Employment & Training Program (SNAP E&T)
- Medicaid Eligibility and Claims
- Vital Statistics
- TWIST Foster Care & Adoption
- HANDS

Kentucky Board of Nursing Medical Licensure Board

- Nursing Licenses

Justice and Public Safety Cabinet

- Corrections

Industry Certification

- National Institute for Automotive Service Excellence (ASE)
- Computing Technology Industry Association (CompTIA)

Other Data Sources

- Kentucky Chamber of Commerce - Talent Pipeline Management
- Governor's Office Of Early Childhood - Head Start
- Coleridge Initiative - Out of State Education and Employment and Wage Data

Kentucky Transportation Cabinet

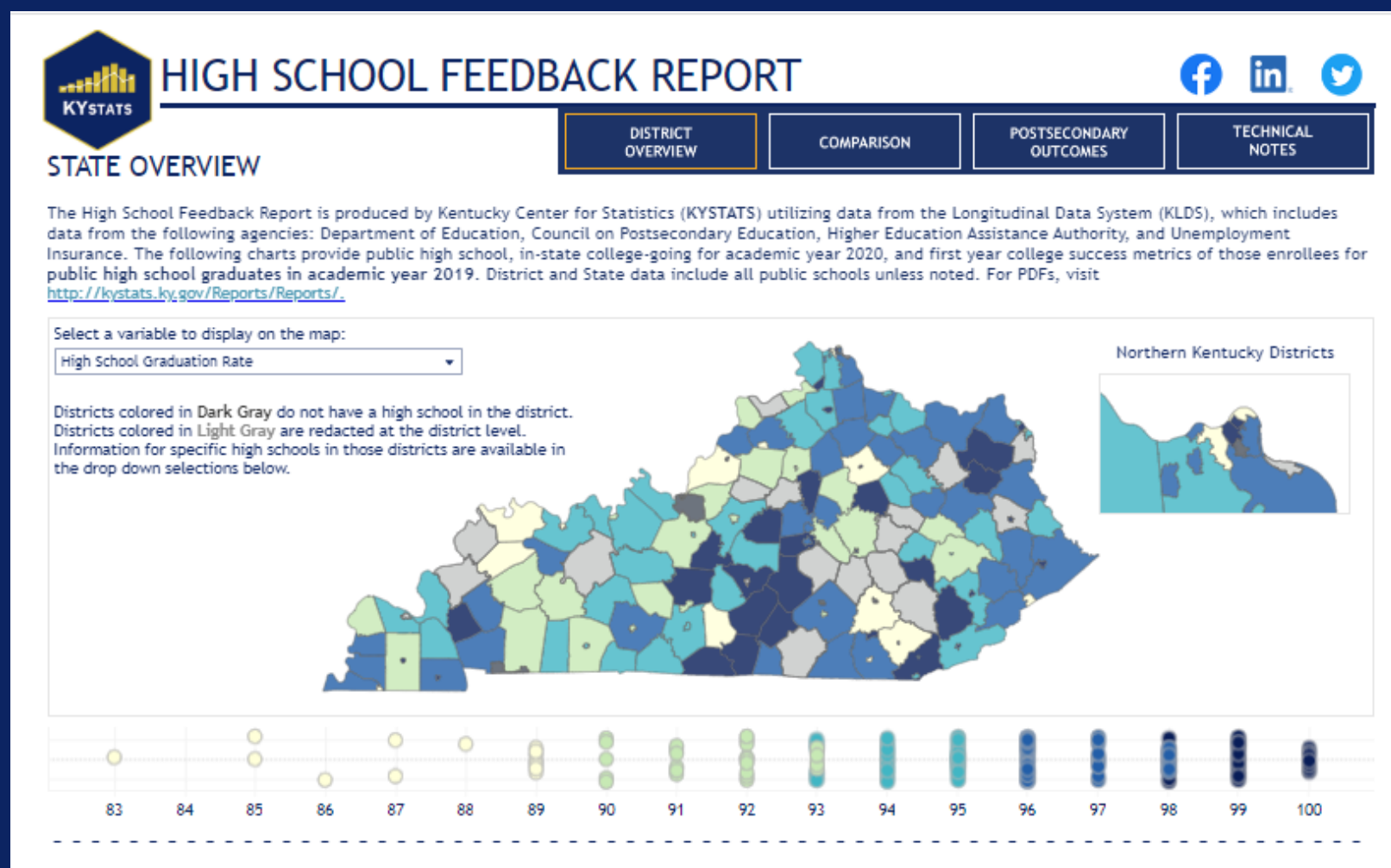
- Driver Licensing

In-Progress Relationships

- Justice and Public Safety Cabinet - Department of Juvenile Justice

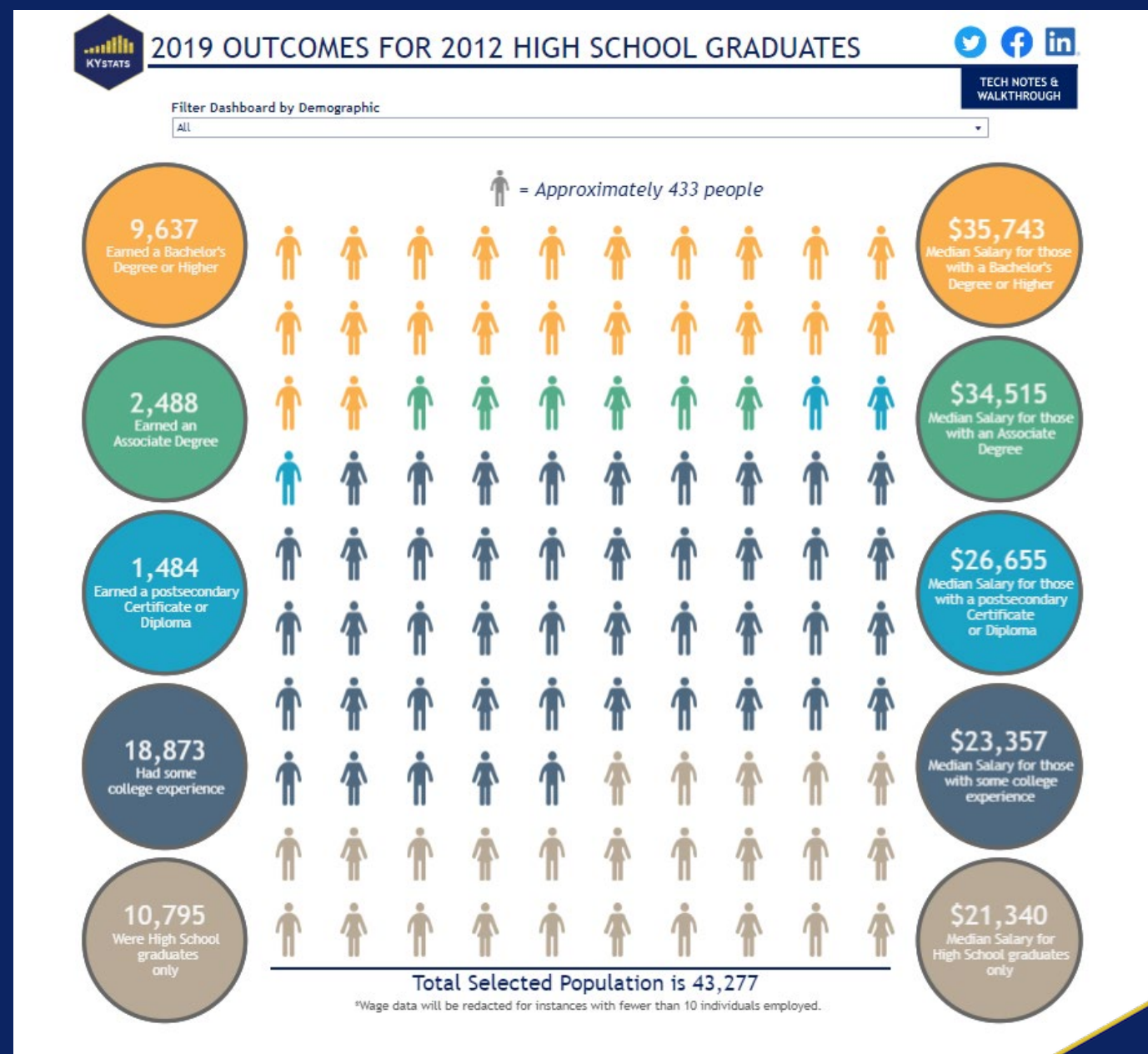
What Tools Do We Provide for High School Students?

High School Feedback Report: Allows users to explore data to show student outcomes for each high school, including graduation rates, FAFSA completion, postsecondary success over time, and wages.



What Tools Do We Provide for High School Students?

Life Outcomes for High School Graduates:
Follows the 2012 Kentucky high school graduating class to display their educational and workforce outcomes 7 years after graduation.



What Tools Do We Provide for High School Students?

Kentucky Student's Right to Know: Designed to help prospective students make more informed decisions about their futures and ensure that they are adequately aware of career paths, employment outcomes, and the cost of college.





Kentucky Students' Right to Know



This dashboard is powered by the Kentucky Center for Statistics. Screen readers may need to click the enter key to select options in filters. ** indicates redacted data. This dashboard is best viewed on desktop. If you have any questions regarding accessibility, please contact kystats@ky.gov.

For reports on Pre-K, K-12, postsecondary, and more, follow us on social media @kystats or visit our website:

<https://kystats.ky.gov/>

An alternative, accessible format in Excel is available for download here:

<https://tinyurl.com/DownloadAccessibleExcelFile>

Technical documentation can be found in PDF form here:

<https://tinyurl.com/TechNotesPDF>

The current dashboard has been designed to link college majors to the most in-demand jobs in the state along with typical education requirements, wages, and institutions offering these majors. Filters will change the dashboard to reflect outcomes for chosen majors of interest. Users can also see financial aid and graduate outcomes for selected majors at various postsecondary institutions, helping prospective students make more informed decisions about their future and ensure that they are adequately aware of the cost of college. Additional Pathways information is also provided.

Do you want to filter by most common majors or all majors?

Top 60 Most Popular Majors

Select a specific major of interest to filter the dashboard.

Biology/Biological Sciences, General

Top Occupations by Average Annual Openings for Selected Major

Occupation	Typical Education Required for Entry Level	Projected Annual Openings	Early Career Salary	Mid-Career Salary	Late Career Salary
Secondary School Teachers, Except Special and	Bachelor's degree	873	\$47,395	\$56,180	\$63,994
Biological Science Teachers, Postsecondary	Doctoral or professional degree	63	\$51,287	\$64,372	\$83,105
Biological Technicians	Bachelor's degree	50	\$32,482	\$43,064	\$54,678
Agricultural Technicians	Associate degree	43	\$34,811	\$40,817	\$49,571
Food Science Technicians	Associate degree	43	\$34,811	\$40,817	\$49,571

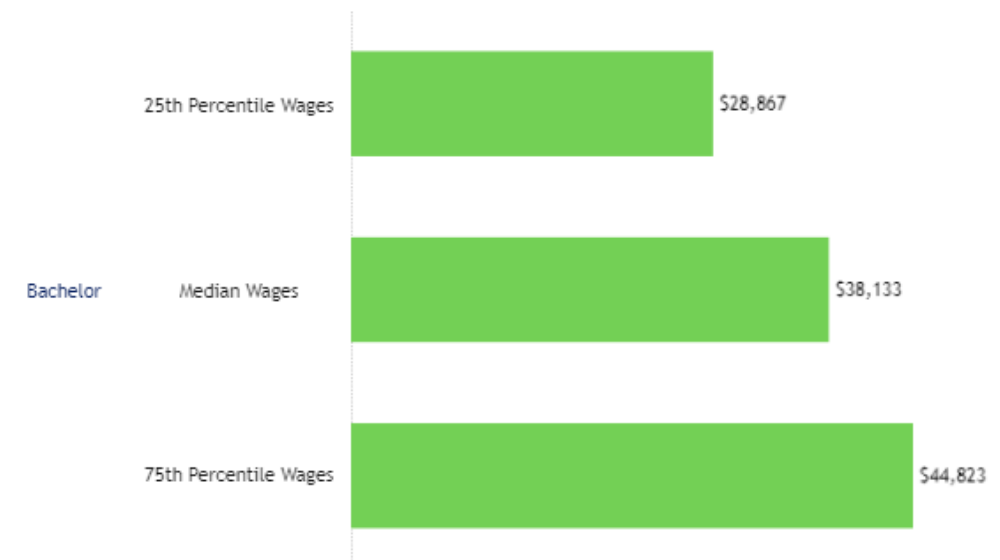
Graduation Outcomes for Selected Major at Selected Institution

	2016 Grads	Average Years to Degree
Bachelor	65	4.2

Loan Information for Selected Major at Selected Institution

	Receiving Loans	Average Loan Amount
Bachelor	51%	\$29,357

Typical 2019 Salaries for Graduates Employed in KY of the Selected Major at the Selected Institution



Percent Employed in KY (2019) for Graduates of the Selected Major at the Selected Institution



The Kentucky Student's Right to Know Act

House Bill 419 (2020)

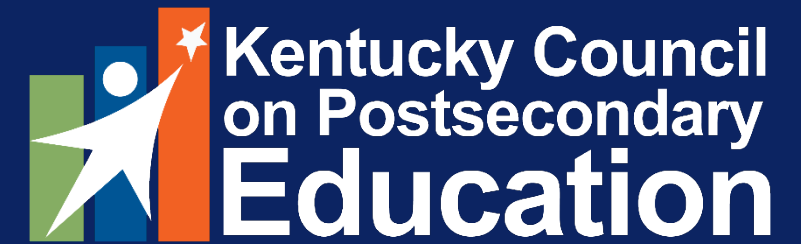
Enacted July 1, 2021, the legislation requires an annual compilation of state data that displays:

- Cost of college by public postsecondary institution
- In-demand jobs linked to majors of interest
- Financial aid availability
- Majors offered by public colleges & universities
- Graduation rates
- Available alternative pathways (Career & Technical Education & Apprenticeships)





What We Did



Data were collected from the following institutions and linked to data in the Kentucky Longitudinal Data System:



MURRAY STATE
UNIVERSITY



NORTHERN
KENTUCKY
UNIVERSITY



KENTUCKY
COMMUNITY & TECHNICAL
COLLEGE SYSTEM



UNIVERSITY OF
LOUISVILLE



University of
Kentucky

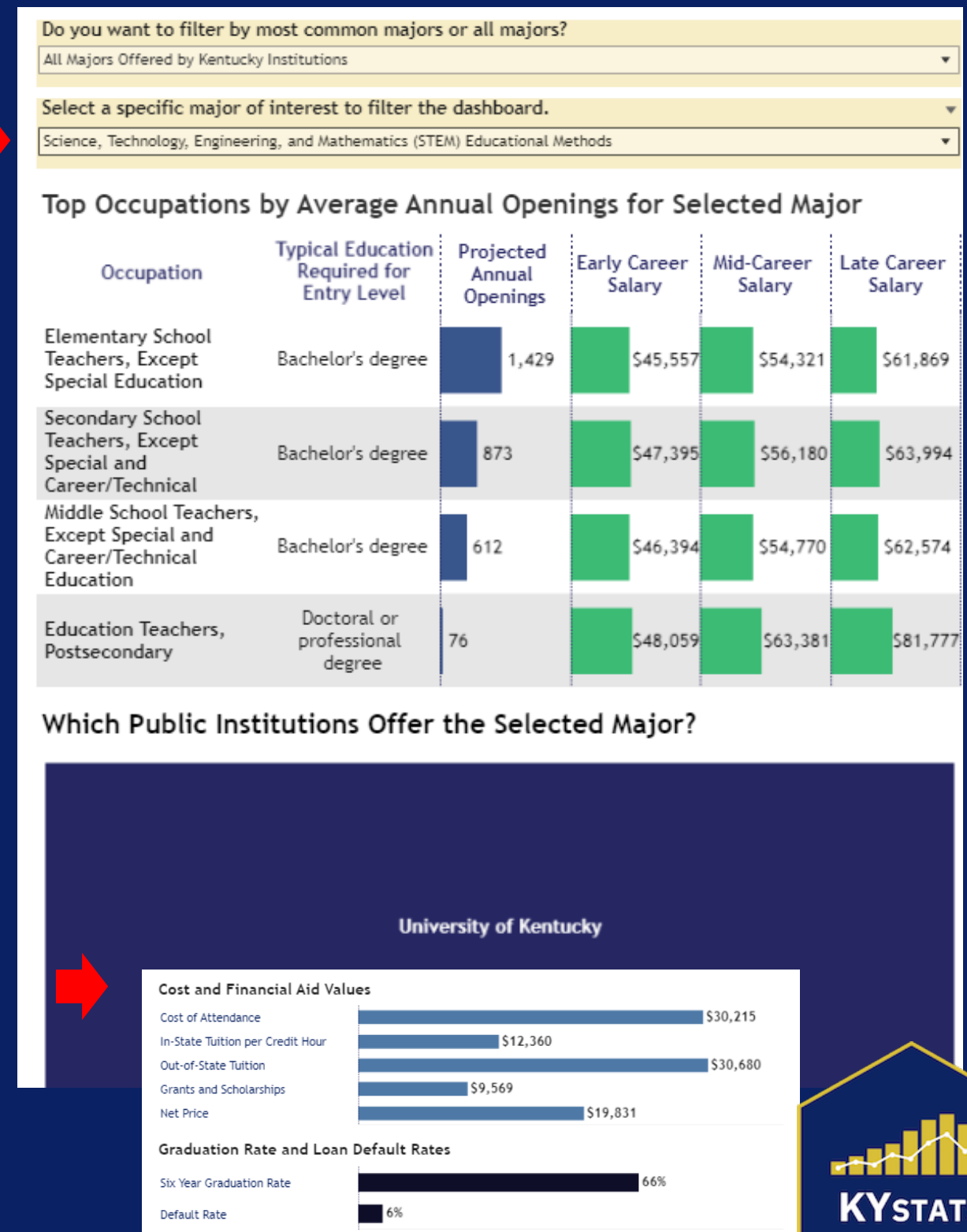
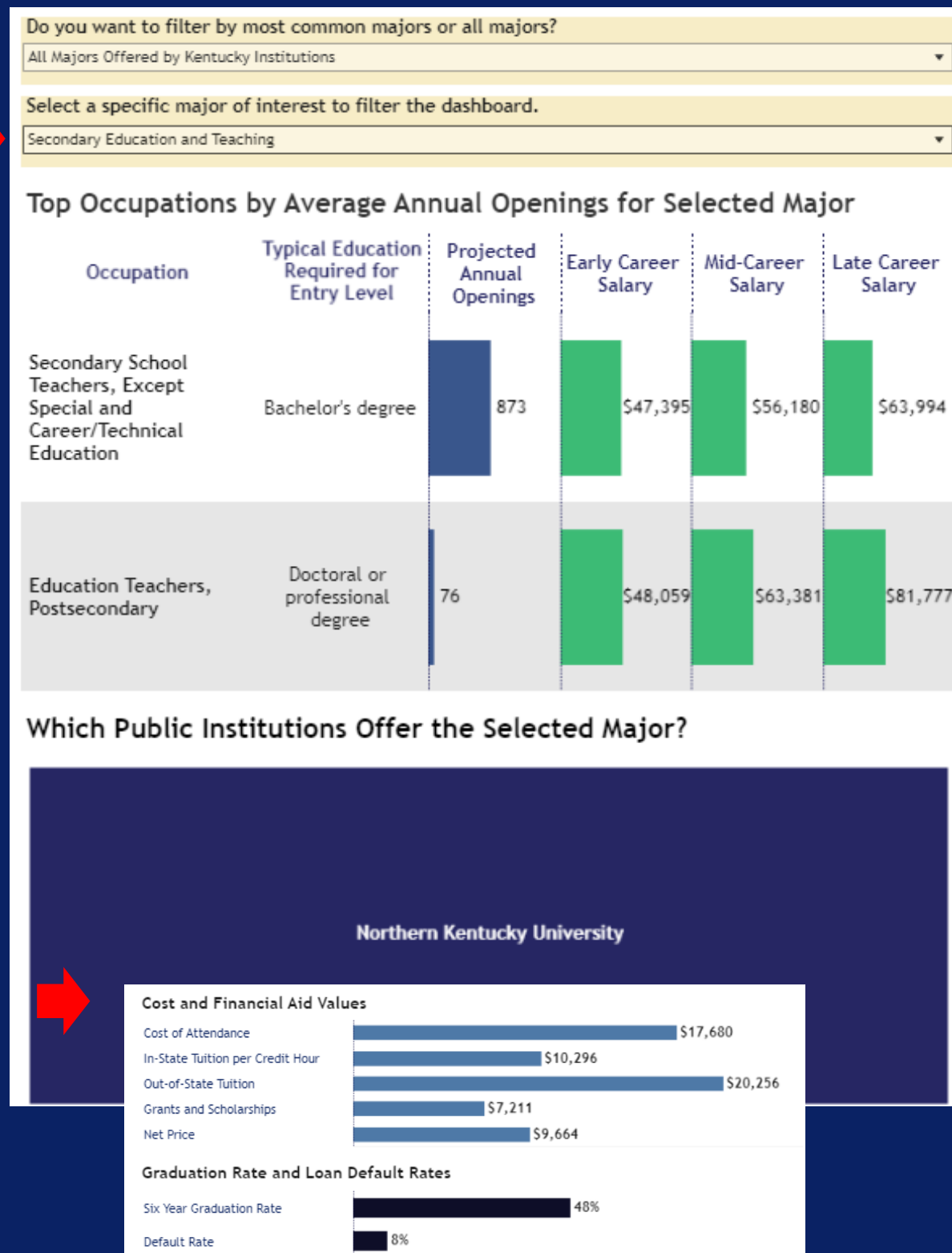
Sharing with High School Students...

- What are your areas of interest?
- Which schools offer that degree or credential program?
- What is the demand for that career?
- How much money can I make?
- How much college debt would I have?



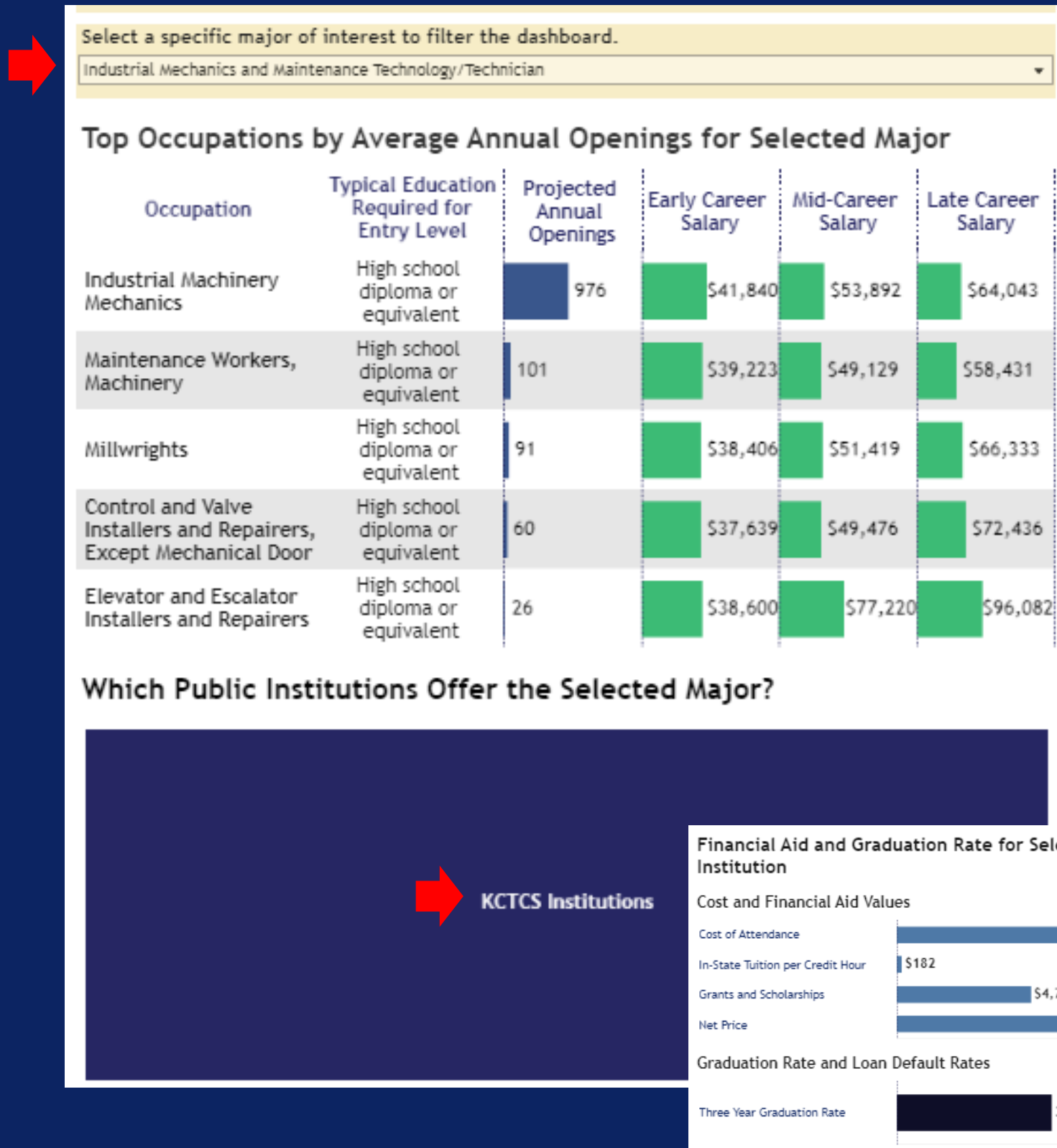
Area of Interest

“I want to be a high school science teacher.”

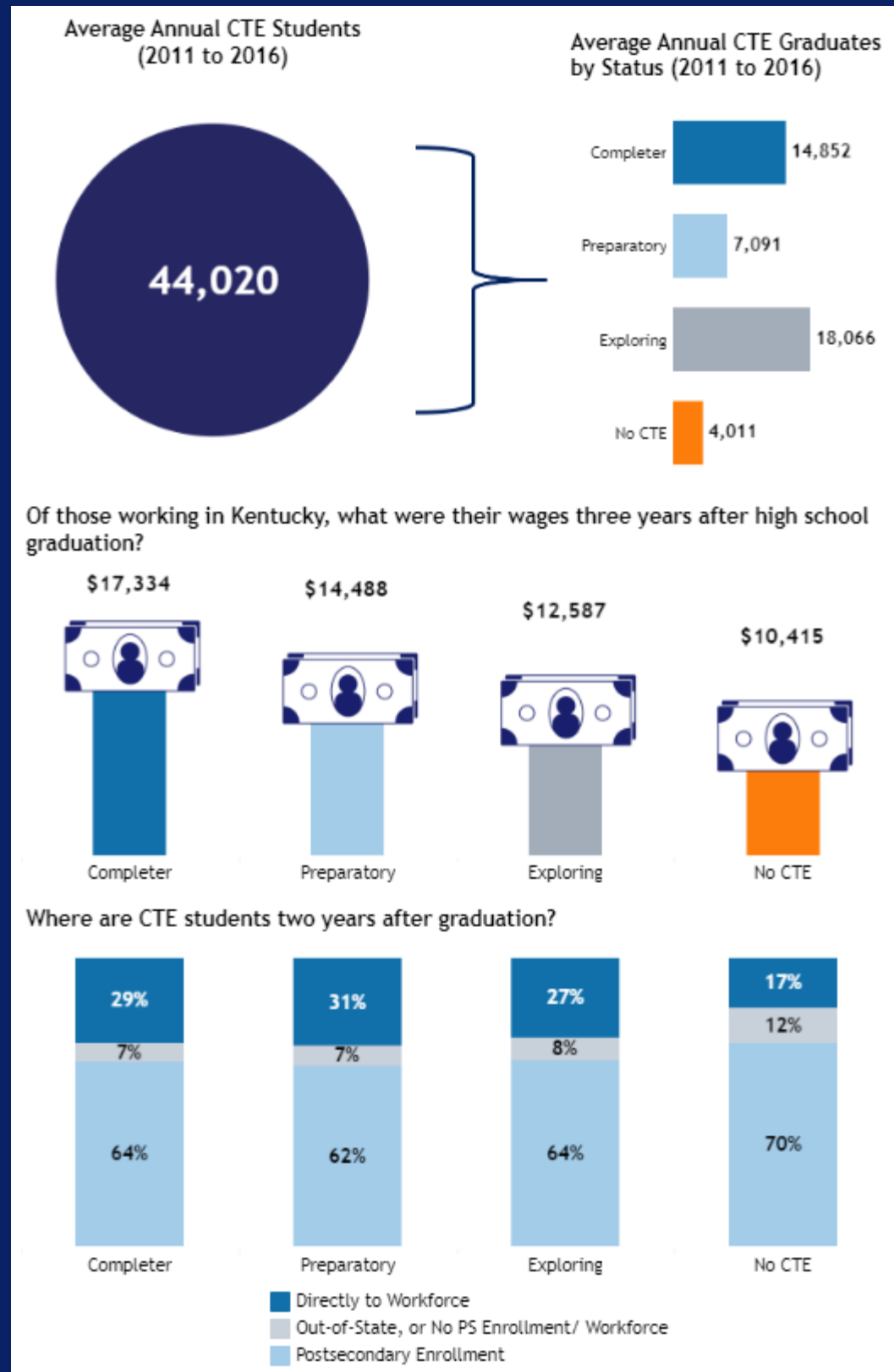


Area of Interest

“I want to work in industrial maintenance.”



Alternative Pathways



- Career and Technical Education
 - Completers and progress
 - Postsecondary or workforce
 - Average wages after graduation
- Apprenticeship



STUDENTS' **Right to Know**

One stop to look up career
salaries & where you can learn
the skills to get the job.



<https://kystudentrighttoknow.ky.gov/>

Explore. Prepare. Succeed.

Ready to learn more?

kystats.ky.gov
@kystats

Jessica Fletcher, MPA
Marketing Analytics Director
jfletcher@ky.gov

Scott Secamiglio, MPH
Visual Analytics & Strategy Director
scott.secamiglio@ky.gov

