



**1st EMPLOYMENT
FIRST
*Kentucky***

Executive Order 2020-552

signed June 29, 2020

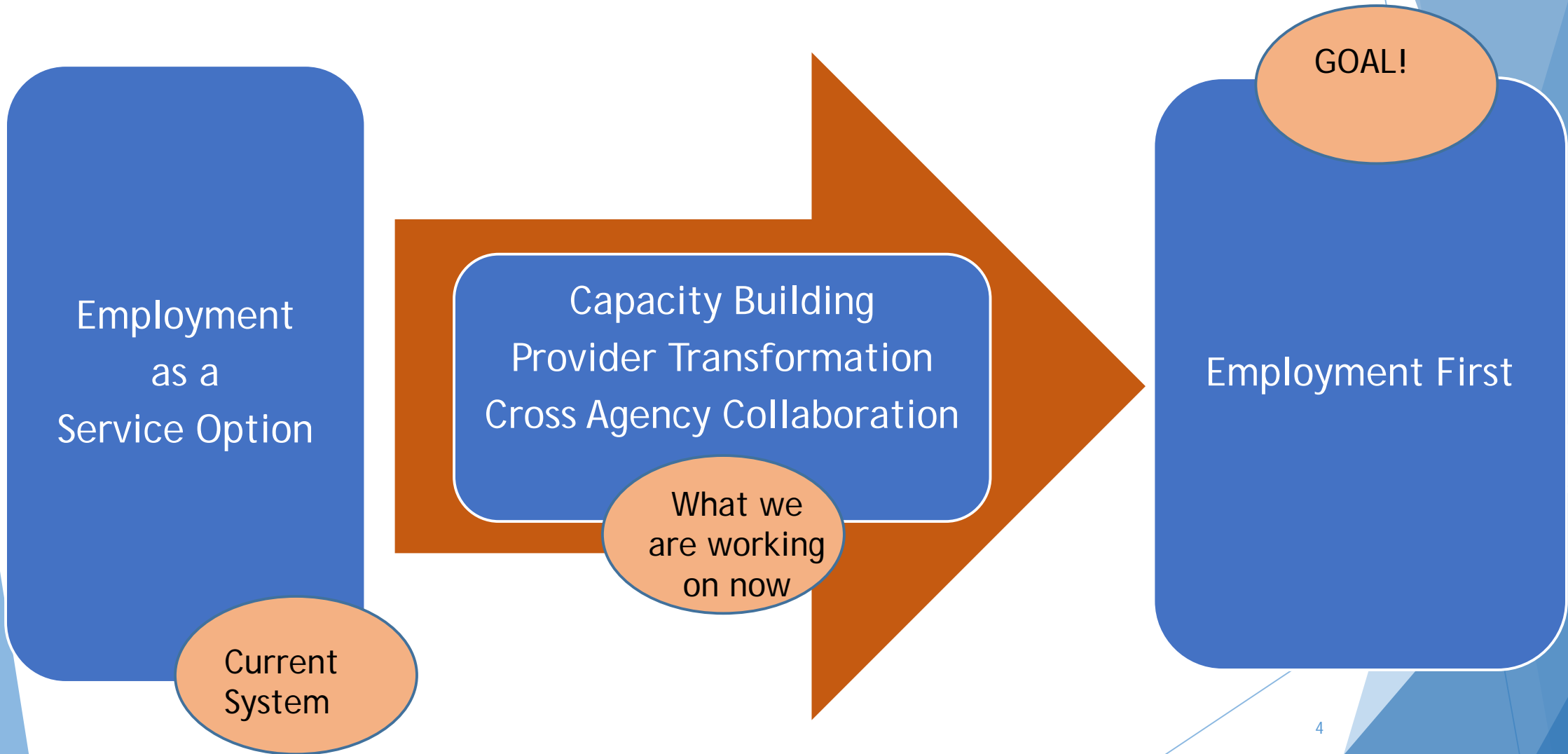
- ▶ It is the policy of the Commonwealth of Kentucky that competitive integrated employment in the community shall be considered the first and primary option for persons with disabilities of working age who desire to become employed.



What is Employment First?

- ▶ A philosophy
- ▶ A movement
- ▶ A policy direction

The Road to Employment First





Culture Shift Needed

Collaboration between various combinations of service components which will have to work together with the common goal of integrated community employment.

Skilled Employment Professionals with an understanding of how employers operate and what they need.

Employers who are willing to offer work experiences and jobs for people with disabilities.

Presumption of Employability: the belief in the inherent value of all people with disabilities as potentially contributing workers, regardless of the nature of the disability or the need for supports.

Employment First

www.employmentfirstky.org

